

**DISC BRAKES***Click photos to enlarge!***Advantages:**

- High friction factor stability
- Low wear of material and counter material
- Very moisture-resistant
- Emitting minimum noise and odour

The materials do not contain any raw material that is included in the list of harmful substances.

For further details please click on the respective composite material.

Version: 09/2004

Composite material	Wheel load [ tons ]	Speed max. [ km/h ]	Application examples	Counter material	Approvals appl. examples
--------------------	---------------------	---------------------	----------------------	------------------	--------------------------

Composite material	Wheel load [ tons ]	Speed max. [ km/h ]	Application examples	Counter material	Approvals appl. examples
<a href="#">BK 2000</a>	6,7 - 7,5	200	Railway passenger car, very moisture-resistant	GG, GGG	UIC-541-3 DB, DSB, etc.
<a href="#">BK 7699</a>	6,7 - 7,5	200	Railway passenger car, very moisture-resistant	GG, GGG	UIC-541-3 FS, ÖBB, SNCF, Renfe, etc.
<a href="#">BK 5818</a>	6,7 - 7,5	200	Railway passenger car	GG, GGG	UIC-541-3 discontinue
<a href="#">BK 7478</a>	6,7 - 7,5	200	Railway passenger car	GG, GGG	NS, SNCF, etc.
<a href="#">BK 2050</a>	4 - 10	250	Local traffic, tramway, wheel brake	GG, GS, GGG	NS, VR, JR, etc.
<a href="#">BK 2053</a>	4 - 10	230	Local traffic, optimised for low wear	GG, GS, GGG	
<a href="#">BK 2054</a>	4 - 10	250	Local traffic, optimised for low wear	GG	
<a href="#">BK 3000</a>	4 - 5	300	High-speed ICE, very moisture-resistant	GGG	UIC-541-3 will be expected, DB
<a href="#">BK 3100</a> Replacement for sinter	4 - 5	320	High-speed ICE	GS	
<a href="#">BK 3500 CL</a> Sinter	4 - 5	320	High-speed	GS	SNCF
<a href="#">BK 3200</a>	4 - 5	300	High-speed (aluminium brake disc)	Duralkan	NSB
<a href="#">BK 6303</a>	4 - 10	160	Local traffic commuter trains	GG	
<a href="#">BK 4971</a>	6,7 - 7,5	160	Local traffic X-waggon	GG	DB, etc.
<a href="#">BK 6120</a>	4 - 10	140	Local traffic tramway	GG	
<a href="#">BK 6481</a>	4 - 10	160	Local traffic subway	GG	
<a href="#">BK 7776</a>	6,7 - 7,5	160	Local traffic public services	GG	



## BLOCK BRAKES



*Click photos to enlarge!*

### **Advantages:**

- High friction factor stability
- Low wear of material and counter material
- Very moisture-resistant
- Emitting minimum noise and odour

The materials do not contain any raw material that is included in the EU list of harmful substances.

*For further details please click on the respective composite material.*

Version: 09/2004

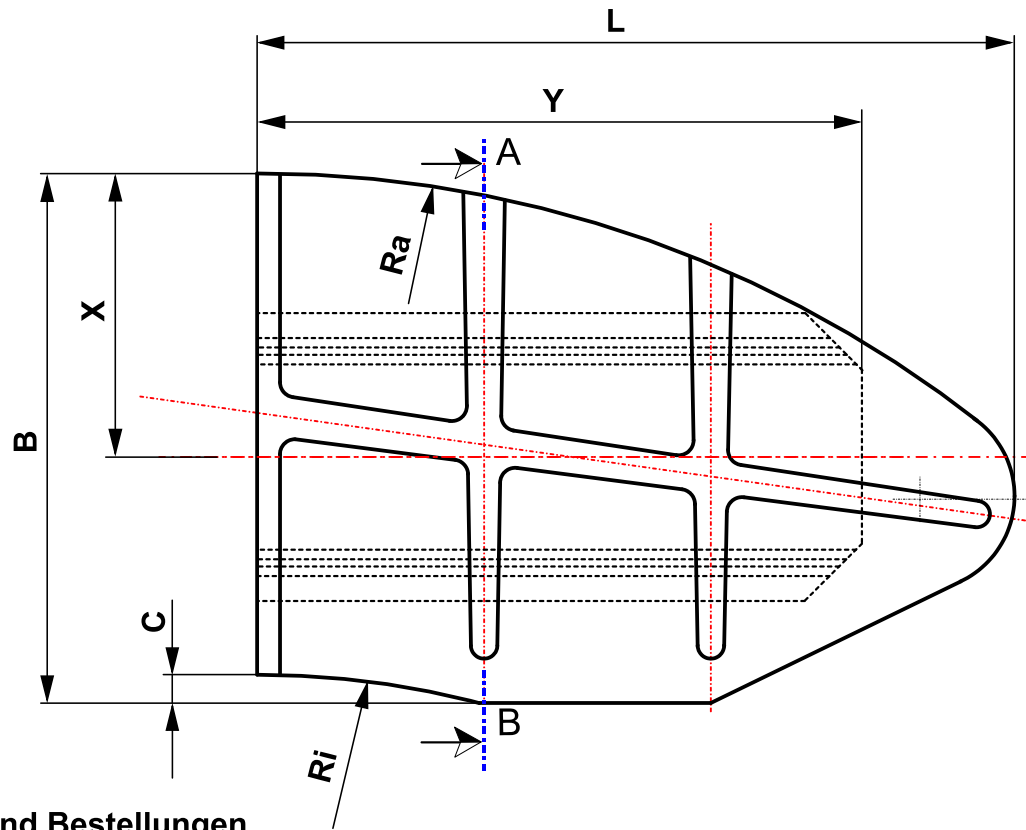
Composite material	Speed max. [ km/h ]	Temp. stress [ °C ]	Level of friction factor (nominal value)	Application example	Program dynamometer
--------------------	---------------------	---------------------	--	---------------------	---------------------

<u>BK 111</u>	120	550	0,08 - 0,17	Commercial transport, GG-replacement	UIC-541-4 LL Perform
<u>BK 210 Sinter</u>	120	650	0,08 - 0,18	Commercial transport, GG-replacement	UIC-541-4 LL Perform
<u>BK 208</u>	140	450	0,15 - 0,22	Local traffic	UIC-541-4 LL/K Perform
BK 508	140	450	0,17 - 0,24	Commercial transport	UIC-541-4 LL/K Perform
<u>BK 601</u>	140	450	0,19 - 0,28	Local traffic	UIC-541-4 K Perform
<u>BK 8675-1</u>	140	450	0,25 - 0,35	Commercial transport	UIC-541-4 K Perform
<u>BK 8675-H</u>	140	450	0,27 - 0,38	Newly-built vehicles commercial transport	UIC-541-4 K Perform
<u>BK 304</u>	140	450	0,33 - 0,45	Commercial transport	UIC-541-4 K Perform

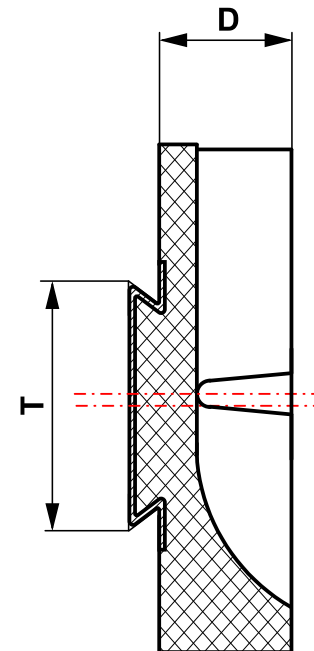
### **Note:**

We will develop composite materials to cope with Specific climatic and geographical conditions.

The material descriptions of the composite materials are available as pdf document. To read these documents you need the Adobe Acrobat Reader. If this programme is not installed, you can download it [here](#) free of charge.



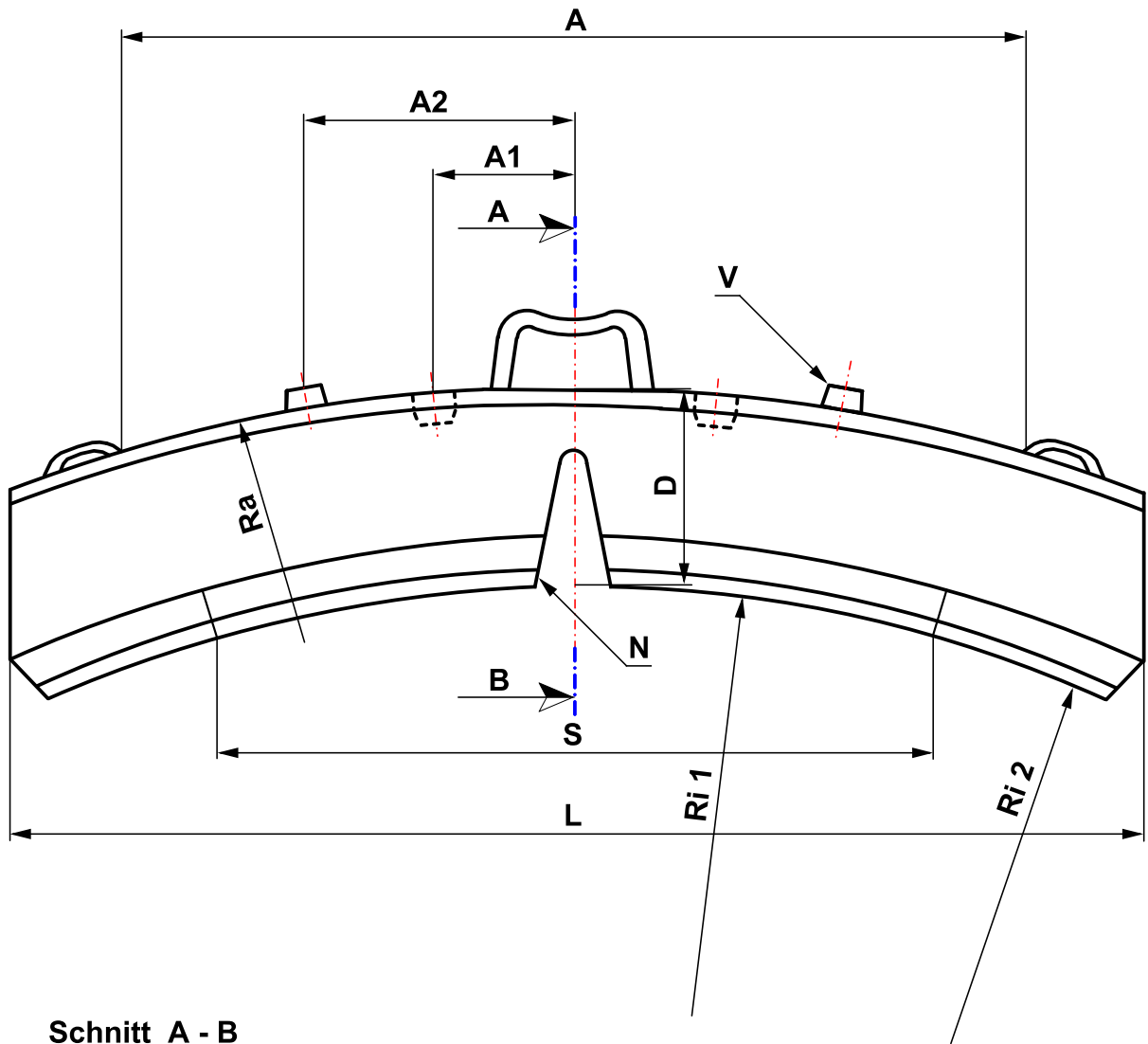
**Schnitt A - B**



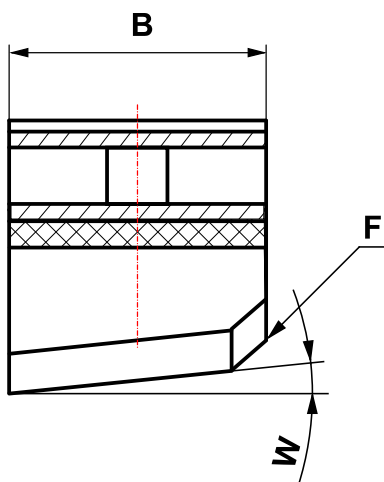
Bei Anfragen und Bestellungen benötigen wir nachfolgende Informationen:

B:	.....mm
D:	.....mm
L:	.....mm
Ra:	.....mm
Ri:	.....mm
T:	.....mm
X:	.....mm
Y:	.....mm
C:	.....mm





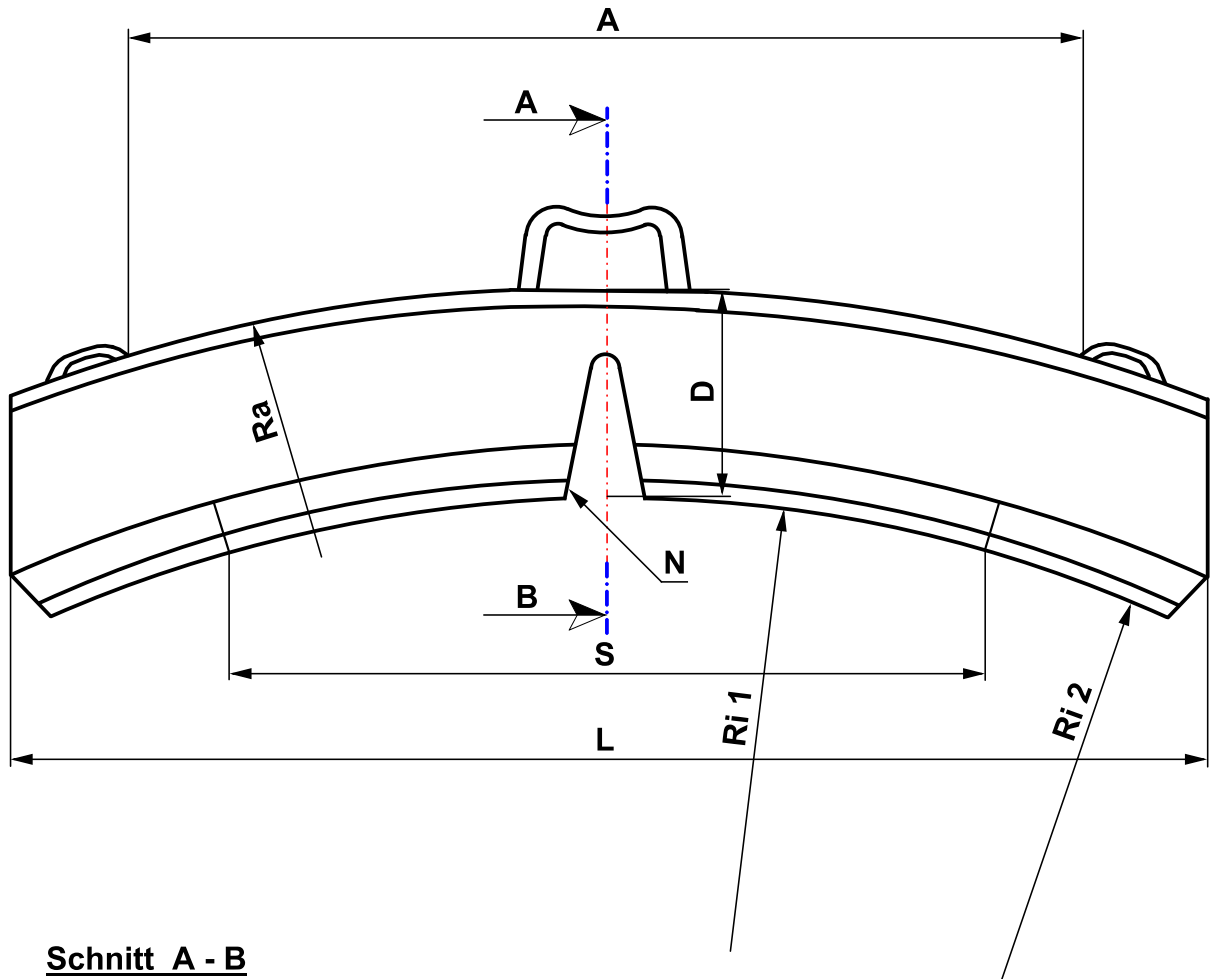
**Schnitt A - B**



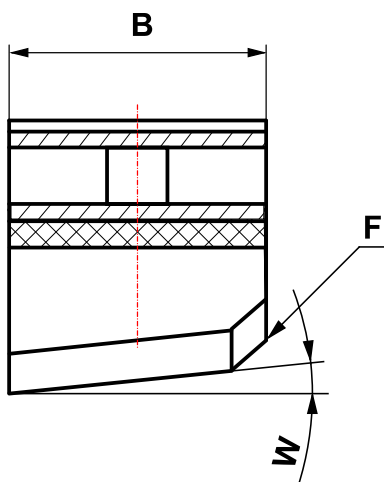
Bei Anfragen und Bestellungen benötigen wir nachfolgende Informationen:

B:	.....mm
D:	.....mm
L:	.....mm
Ra:	.....mm
Ri1:	.....mm
Ri2:	.....mm
S:	.....mm
A:	.....mm
W:	.....
F:	.....mm
N:	.....mm
A1:	.....39±1mm
A2:	.....78,5±1mm





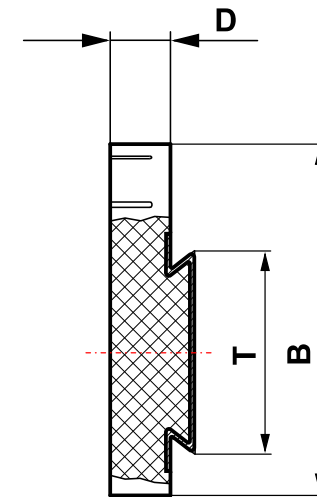
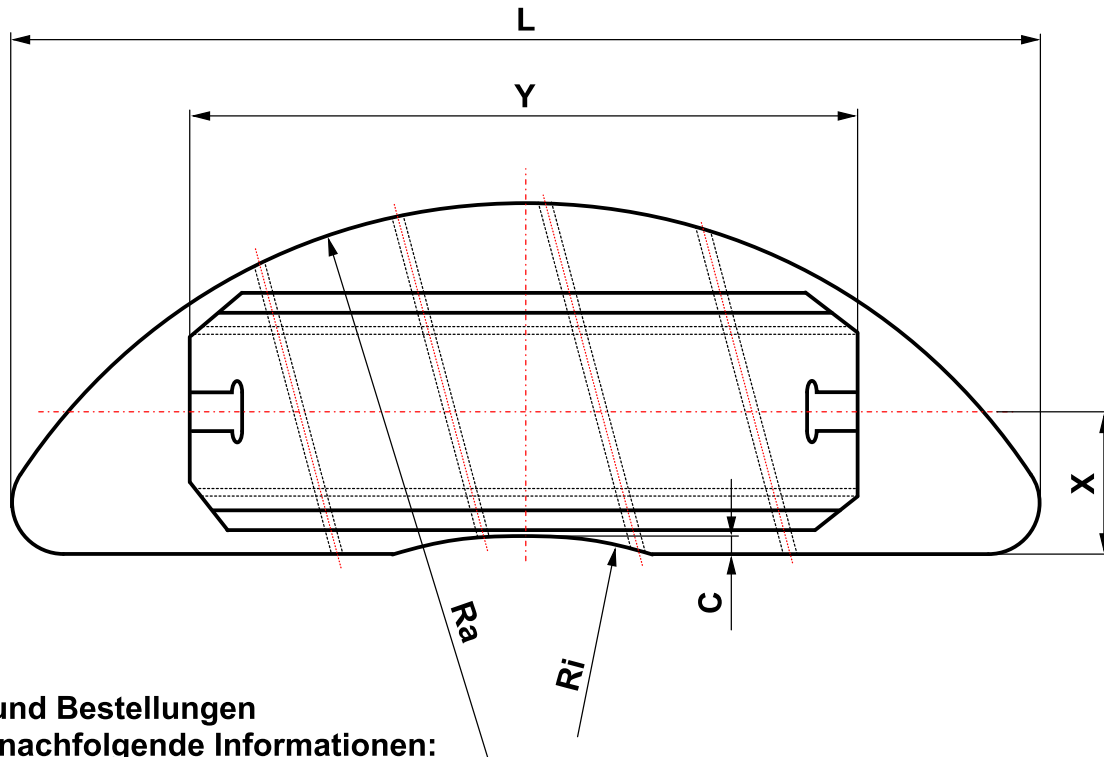
**Schnitt A - B**



Bei Anfragen und Bestellungen benötigen wir nachfolgende Informationen:

B:	.....mm
D:	.....mm
L:	.....mm
Ra:	.....mm
Ri1:	.....mm
Ri2:	.....mm
S:	.....mm
A:	.....mm
W:	.....
F:	.....mm
N:	.....mm

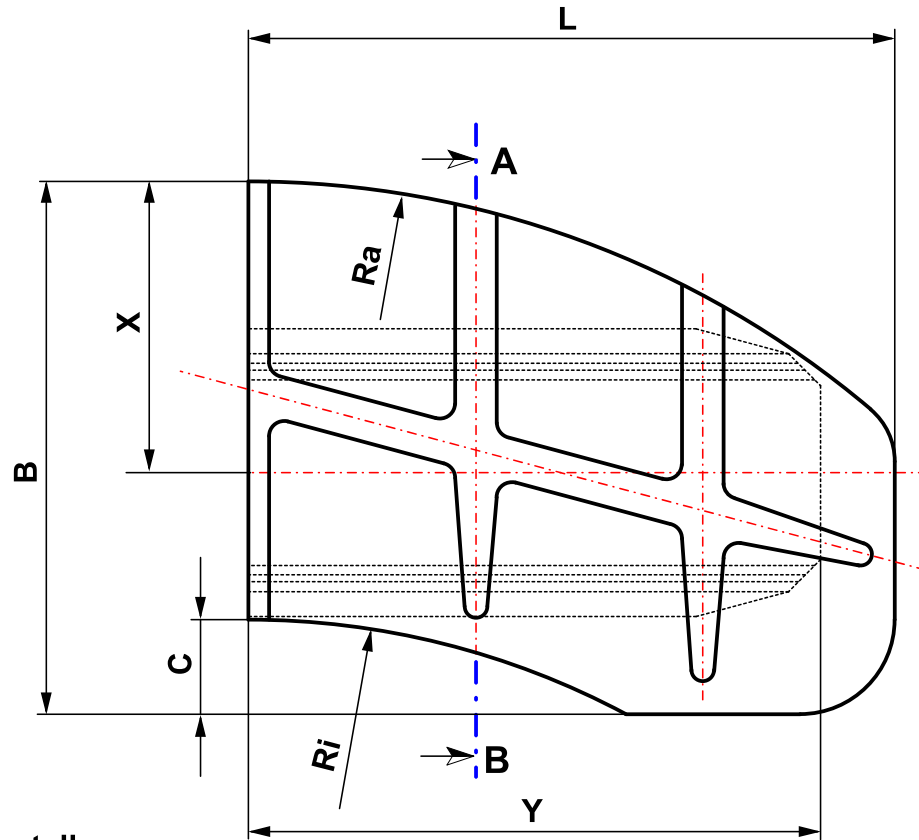




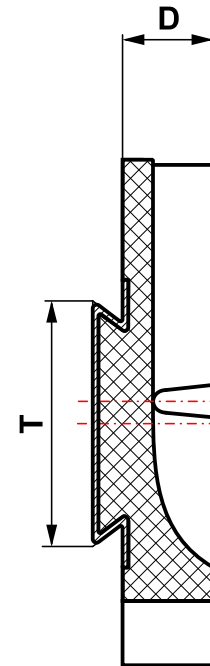
Bei Anfragen und Bestellungen benötigen wir nachfolgende Informationen:

B:	.....mm
D:	.....mm
L:	.....mm
Ra:	.....mm
Ri:	.....mm
T:	.....mm
X:	.....mm
Y:	.....mm
C:	.....mm





**Schnitt A - B**



Bei Anfragen und Bestellungen benötigen wir nachfolgende Informationen:

B:	.....mm
D:	.....mm
L:	.....mm
Ra:	.....mm
Ri:	.....mm
T:	.....mm
X:	.....mm
Y:	.....mm
C:	.....mm

